



## Advanced financial analytics inside Microsoft Dynamics 365 Business Central

Microsoft | Dynamics 365

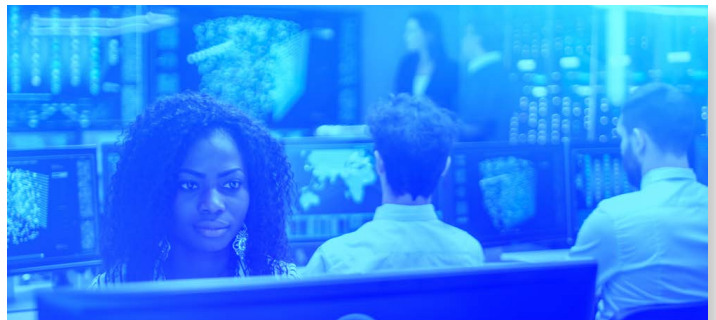
Using real data from your operations and converting it into useful information will allow you to make correct decisions for the growth of your business. But do you recognize these issues?

“My ERP has all the data, and I am able to find it with some effort, but it would be easier for me to see KPIs that I need almost daily within the same environment.”

“We use spreadsheets and manual processes to analyze our data. It is an expensive process in staff time.”

«Time is money and I cannot wait that long to see reports with such repetitive operations.»

Our advanced finance analytics solution is the answer, natively integrated with your Dynamics 365 Business Central application, surfacing real data from your day-to-day operations with an additional layer of business intelligence using Microsoft Power BI.



### Why is BI for Business Central the right product for you?

Getting a bird's-eye view of your business finances is not easy – with a lot of data to track and many variables to consider. Business Central is optimized for operational day-to-day work rather than analysis to support decision-making.

Power BI is a powerful tool to surface key data into digestible and meaningful reports. But sometimes, companies think it will take too long or they don't have skills to set up BI reports.

Therefore, we have created an out-of-the-box Power BI pack for you.



BI for Business Central includes a set of dashboards to meet your needs, with various data panels (more than 120 in total) covering different areas:

- Balance sheet
- P&L
- Invoices
- Working capital
- Liquidity
- Profitability
- Margin
- Debt
- Payments



## Make the right strategic choices

Understand your business, your strengths, weaknesses and opportunities for growth; to make the correct moves and gain a competitive edge.



## Put data at the core of your decision-making

Avoid guesswork and base your plans on clear and up-to-date information.



## Improve your operational efficiency

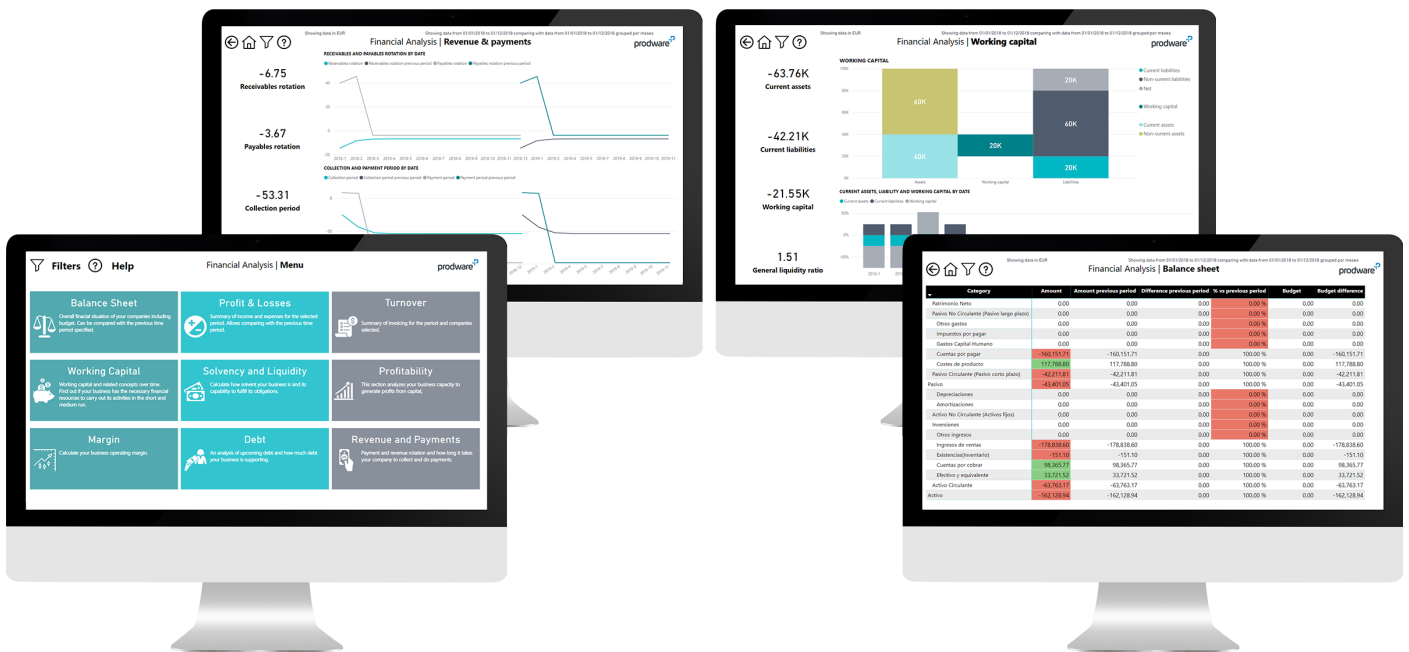
Forget about waiting days or weeks to get the report you need. It's already there.



## Make your management' lives easier

Instead of having to manipulate endless spreadsheets, your team are now empowered to produce business value with the information they need just one click away.

BI for Business Central can be accessed from inside your Business Central application. No need for additional software or switching applications. Your operational system and your reports, side by side.



Contact us and let's explore together the best way to take advantage of BI for Business Central's advanced technology to optimize your processes, plan your future operations, improve your productivity and provide the best possible experience to your customers.



Head Office: 45, quai de la Seine - 75019 Paris  
+33 979 999 799 | www.prodwaregroup.com | letsinnovate@prodwaregroup.com

FRANCE | GERMANY | AUSTRIA | UK | BELGIUM | LUXEMBOURG | NETHERLANDS | SPAIN | ISRAEL | MOROCCO | GEORGIA | CZECH REPUBLIC | US

Gold  
Microsoft  
Partner

